

# POR DENTRO DA MRN INSIDE MRN

Sara  
Quaresma  
Community  
Relations  
Analyst at MRN

## Mining: Growth factor and diversification of the economy

Learn more about  
our activities  
and how they  
contribute to  
the sustainable  
development of  
Western Pará

Income  
generation in  
balance with the  
environment

The future is in the  
West with the New  
Mines Project

Reforestation  
unites traditional  
knowledge and  
technology

**MRN**



The POR DENTRO DA MRN (Inside MRN) is a semi-annual publication through which we share our progress – and our challenges – in a spirit of transparency and collaboration. It is an accountability of our economic, social and environmental results, which contribute to the construction of a legacy in the Western Pará region.

# Index



Who We Are | **6**



MRN in Numbers | **8**



Commitment to Development | **10**



Respect for People | **24**



Respect for the Environment | **34**



## POR DENTRO DA MRN (INSIDE MRN)

Edition 01/2025

Periodicity: Half-yearly

Editorial Board

**MRN Communications Department**

Writing, Production and Publishing

**Máquina PR Team**

Graphic Design and Layout

**Máquina PR Team**

Photos and images

**MRN Archive, Personal Archive and Freepik**

Proofreading and English Version

**Global Technical Services**





## MESSAGE FROM THE BOARD OF DIRECTORS

# Development and sustainability go hand in hand

It is not always easy to understand how a company can positively affect the community it integrates. Contrary to common sense, responsible mining is a great ally in the preservation and socioeconomic development of the region in which it operates.

Sustainability also goes through transparency and, thinking of sharing a little of the reality of our activities, we launched the “POR DENTRO DA MRN” (INSIDE MRN). Through this publication, you will be able to follow the most relevant recent initiatives and results, which include investments that benefit the regional economy, in addition to the numerous actions and programs of socio-environmental impact.

We are aware that MRN operations make a difference in the daily lives of communities, municipalities, in the state of Para and Brazil. Our commitment is to a sustainable future, where mining respects people and the environment and is valued for everything it represents.

Good reading.

**Guido Germani, MRN CEO.**



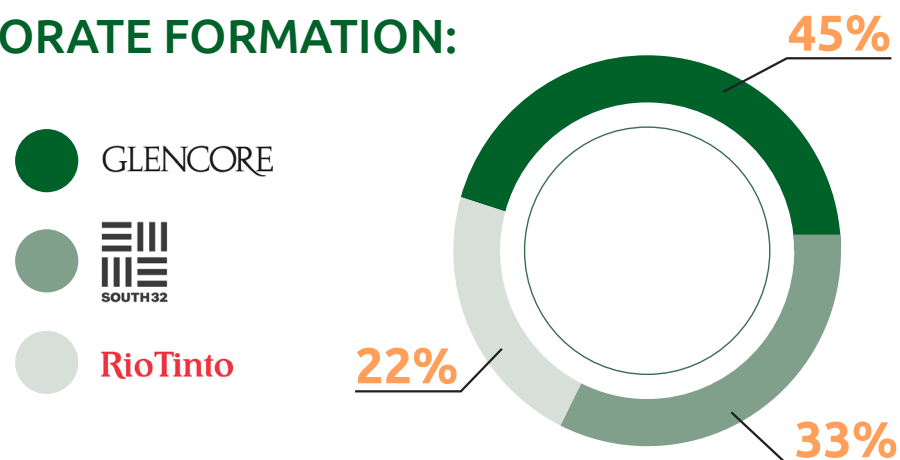
# Who we are

We are Mineração Rio do Norte (MRN) and we have been present for more than four decades in the Western Pará, in the heart of the Amazon.

Guided by the purpose of producing bauxite in a responsible and sustainable way, we destin our production to the national and international markets.

*We are the combination of people, environmental preservation, social responsibility and mining.*

## CORPORATE FORMATION:



## COMMITMENT TO SUSTAINABLE PRACTICES

Global voluntary sustainability initiative



Integrity and compliance in your relationships



Responsible environmental management

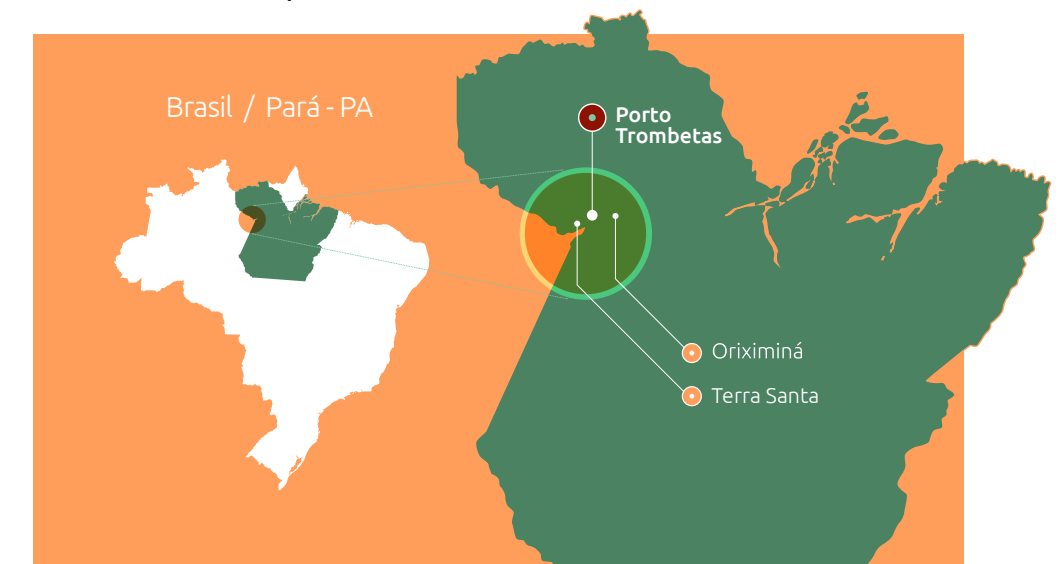


## HERE BEGINS THE ALUMINUM PRODUCTION CHAIN

*Bauxite is the main source for the production of aluminum, used in the manufacture of electronics, household appliances and even automobiles. MRN plays a strategic role in ensuring that the Brazilian aluminum industry, which produces more than 1 million tons/year, remains among the largest in the world.*

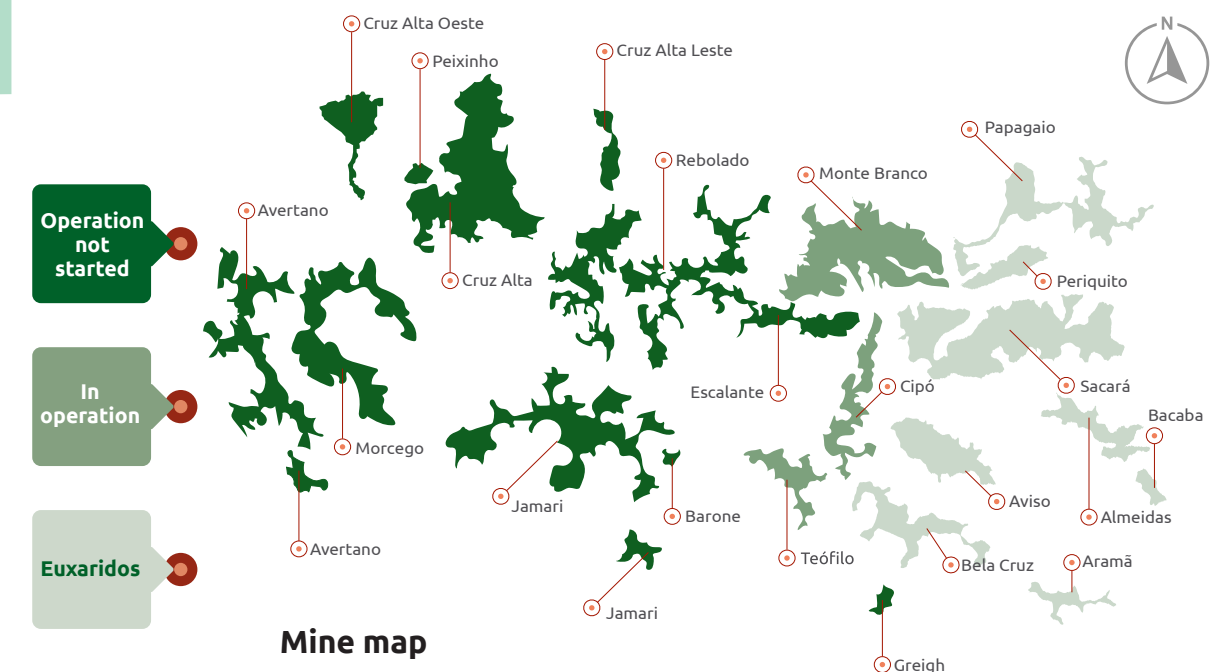
## WHERE WE ARE *We are located in Pará and connected with the world*

Our headquarters are located in the district of Porto Trombetas, in Oriximiná, in the Western Pará, within the Saracá-Taquera National Forest. Our operational area covers the municipalities of Oriximiná and Terra Santa.

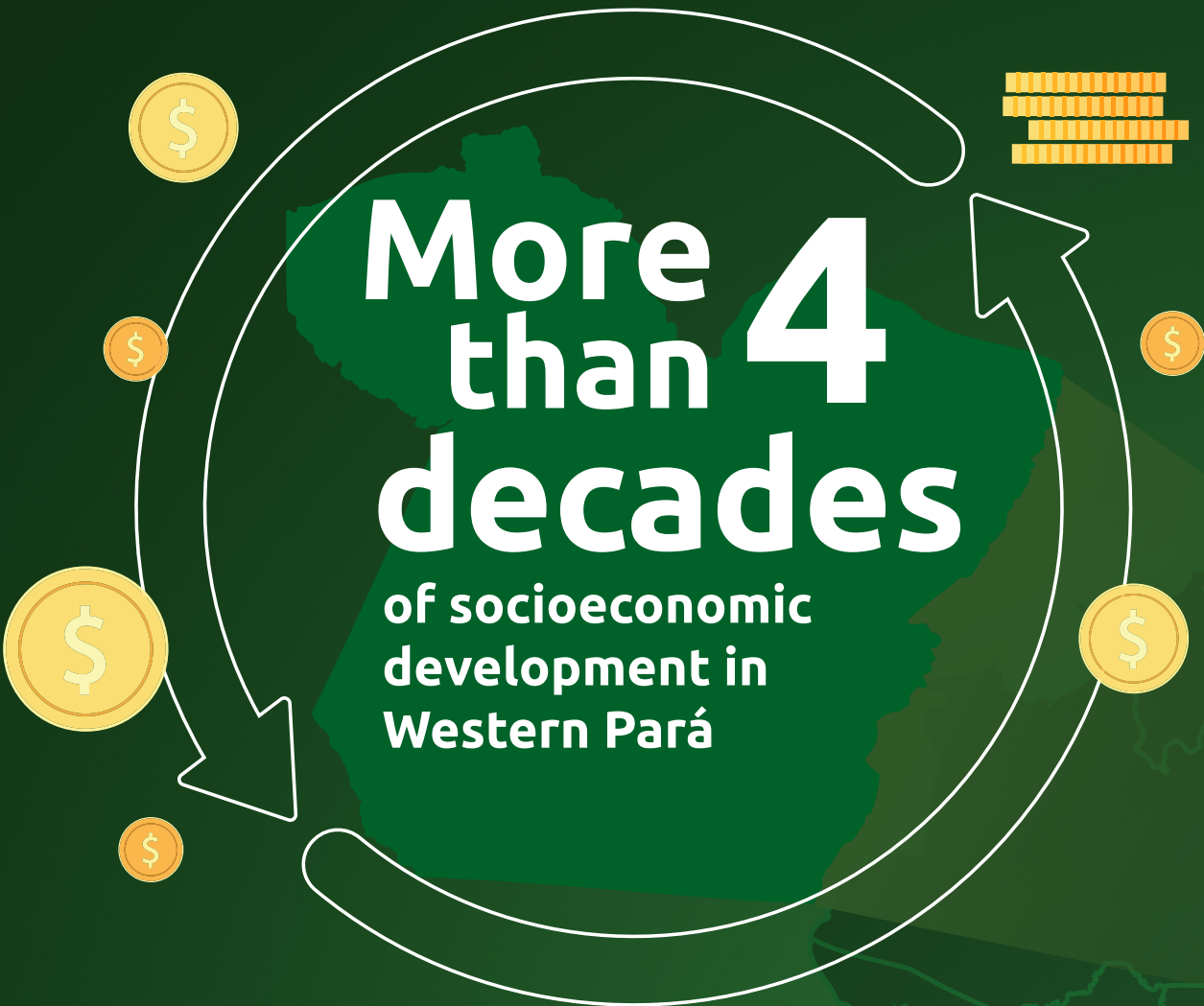


## WHAT WE DO

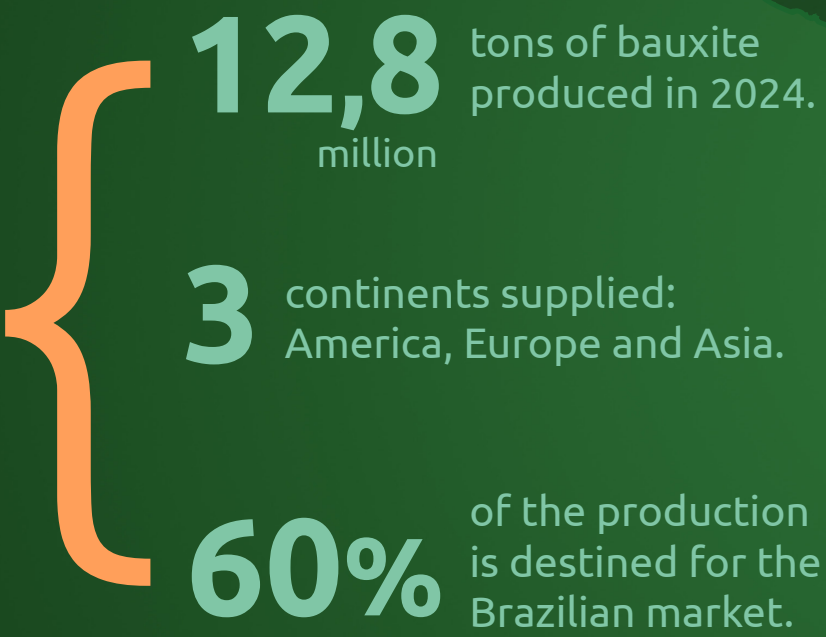
We produce bauxite, the raw material for aluminum. The annual production for 2025 is estimated at 11.5 million tons of bauxite. Our logistics includes a 28 km railway and a port for ore transportation vessels.



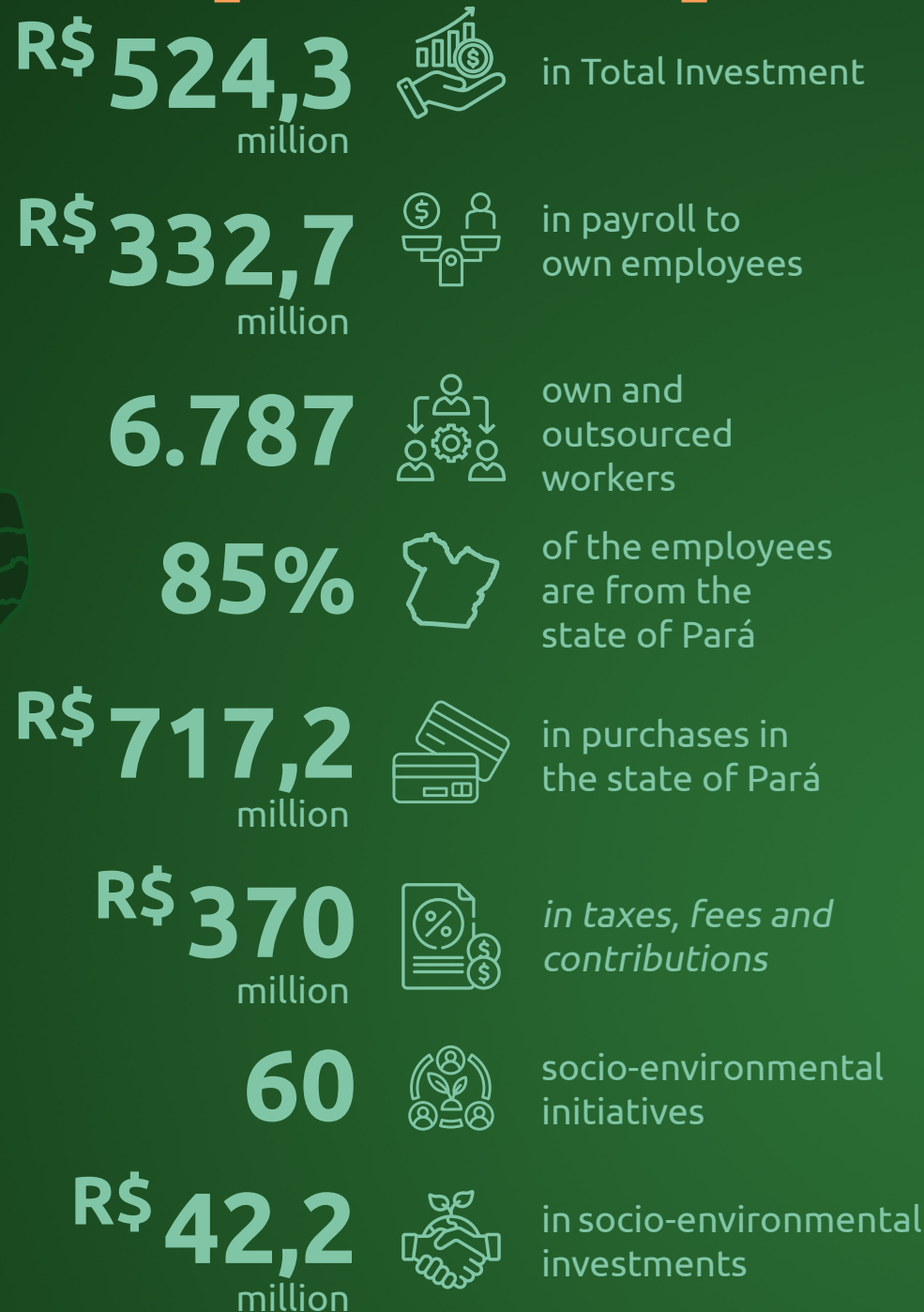
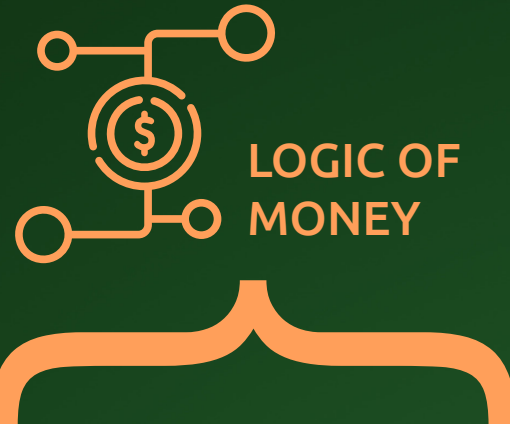




**LEADER IN BAUXITE PRODUCTION IN BRAZIL**



Behind every number, the commitment to the future.





# Mining: Vector of economic development and diversification

We know the importance of bauxite mining for Brazil's economy and what it means to operate in the heart of the Amazon. Therefore, we seek to connect responsible mining to the sustainable development of the region where we operate.

## RESOURCES MOVE THE ECONOMY, GENERATE EMPLOYMENT AND INCOME

The resources injected by MRN into the economy of Western Pará, with the collection of taxes, investments and foreign exchange, contribute both to the expansion of public services and the generation of jobs and income, essential for improving the quality of life.



## BAUXITE MINING CONTRIBUTE TO STRENGTHENING BRAZILIAN ECONOMY

MRN bauxite was essential in helping the primary aluminum industry surpass the production of 1 million tons per year and bring Brazil back to the ranking of the 10 largest producers in the world.

Source: ABAL 2023

## LOCAL PURCHASES TOTAL R\$ 717.2 MILLION IN THE REGION

*Understanding our role in the various economic chains of the region, we prioritize hiring suppliers from Western Pará*

In 2024, we disbursed R\$655.2 million for the acquisition of materials in the region. In the service sector, there were 202 contracts with companies based in the region. The total amount paid, R\$62 million, is equivalent to an average of R\$5 million per month injected into the local economy.

This amount includes the hiring of three community cooperatives employing 533 people. Equipment rental, logistics, transportation, food, construction and consulting services are also among the services.





## TAX COLLECTIONS

**R\$ 104.3** million paid to the State of Pará in taxes, fees and CFEM

**R\$ 202.1** million paid to the Federal Government in taxes, fees, contributions and CFEM. Of the total collected, R\$ 100.0 million comes from withholdings at source. Data from 2024.



## WHAT IS CFEM?

Financial Compensation for the Exploitation of Mineral Resources (CFEM) is a resource paid by mining companies as a compensatory measure for the exploitation of mineral wealth. The amount, based on the sales value, is transferred to the National Mining Agency (ANM). From there, it is distributed to the Union and to the states and municipalities impacted by the activity.

## DIRECT VOLUNTARY TRANSFERS TO QUILOMBOLA COMMUNITIES\*

**R\$ 5.6** million

Paid to the Association of the Remaining Communities of the Quilombo of the Alto Trombetas II (ACRQAT) as a Participation in the 2024 Mining Results regarding the exploration in the Monte Branco plateau.

\* Participation in the Mining Result paid, in 2024, referring to the titling of the quilombola territory.

Check here the 2024 Administration Report:



## TRANSFERS TO MUNICIPALITIES

**Oriximiná**  
**R\$ 27.5 million**  
ISS  
**R\$ 11.4 million**  
CFEM

**Terra Santa**  
**R\$ 1.9 million**  
ISS  
**R\$ 22.6 million**  
CFEM

Of the total collected from municipalities, R\$29.5 million comes from withholding tax (ISS). Data from 2024.



# The future is in the West

*New Mines Project (PNM) and Transmission Line Project (PLT) are part of the strategy for operational continuity in Western Pará, which foresees R\$ 5 billion in investments over the next few years*

In order to continue the virtuous cycle of sustainable socioeconomic development in the Amazon, it is necessary to mine areas further west of current operations, known as the East Zone, which are already heading towards exhaustion.

In response to this challenge, we are in the process of obtaining the licensing of the New Mines Project (PNM), which aims to ensure that our operations continue for another 15 years in Western Pará and foresees:

- **Bauxite mining in 5 new plateaus;**
- **Maintenance of taxes, jobs and socio-environmental projects.**

We have completed six years of hard work to meet all the requirements of environmental agencies and obtain the Enterprise Prior License (LP), reached in October 2024.

Given the complexity of environmental licensing in the Amazon, this process has generated learning for all parties involved: MRN, environmental bodies, communities and for the sector.



## INNOVATION IN THE MANAGEMENT OF TAILINGS DAMS

The Dry Tailings Disposal Method in Pits proposed for the PNM reinforces the safety and sustainability of operations, as it avoids the construction of new reservoirs, with the following benefits:



• Significant reduction in the use of native forest areas.



• Forest restoration in areas that have already been mined.



• Technology aligned with the best sustainable mining practices.

## NEXT STEPS

We still have the challenge of completing the participatory construction and approving the plans with environmental and social conditions together with the quilombola communities.

*Learn more about the New Mines Project (PNM):*



## NEW MINES PROJECT (IF LICENSED)



**R\$ 1,9 billion**  
in new investments



**12,5 million** tons of bauxite per year



**6,000** jobs maintained





## Good practices for climate balance

Our future operations and projects are aligned with practices that can contribute to climate balance. In 2024, for the sixth consecutive year, we won the Gold Seal of the Brazilian GHG Protocol Program for our management of greenhouse gas (GHG) emissions, with the recognition of the quality and transparency of MRN's emissions inventory.



MRN renewed the Gold Seal in the Greenhouse Gas Inventory in 2024, which demonstrates the company's commitment to transparency and the national recognition of good practices, in addition to **enabling more adequate management of its current and future emissions.**



**Target by 2030:** reduce current GHG emissions by approximately **23%.**

Transmission line will **reduce** greenhouse gas emissions by

# 90%

as **emissões** from the power generation process.

- 98 km long transmission line.
- Connects the Oriximiná substation to the future Saracá substation (Porto Trombetas).
- 500 temporary jobs during the implementation phase, with around 250 vacancies for workers from Oriximiná.

## Advance to the energy matrix transition

*Transmission line composes the strategy of operational continuity in the same sustainability parameters of the New Mines Project*

The Installation License for the Transmission Line Project (PLT), which will integrate MRN into the National Interconnected System of the Electric Sector, marked our adherence to an energy matrix of more sustainable sources. With the investment, we will reduce greenhouse gas (GHG) emissions by 90% from the current process of self-generation of energy by thermoelectric plants.



# Protagonists of our journey

*We move forward in actions for the development and well-being of our employees, in an increasingly diverse, inclusive and respectful environment*

## 6.787 professionals

- **1,631** in-house and **5,156** outsourced
- **85%** employees from Pará

### WORKERS BY MUNICIPALITY

- **460** Santarém
- **383** Oriximiná
- **306** Terra Santa
- **96** Óbidos
- **137** Others

*Data from 2024.*

### PEOPLE DEVELOPMENT

- **14,873** participations in training



## Participation of women

Increased from

**10,5%** to

**12,8%**

between 2023 and 2024.

## Participation of quilombolas and riverside communities

Increased from

**5,3%** to

**8%**

between 2023 and 2024.

## DIVERSITY AND INCLUSION

Created to encourage the appreciation of diversity and respect for differences in people management, the “MRN for All” program includes job opportunities and training for women, riverside communities, quilombolas and people with disabilities (PCDs). It also includes actions to promote a safe, welcoming and inclusive environment for the LGBTQIAPN+ community.



## EMPOWERED WOMEN

The increase in female representation in our workforce reflects the expansion of job openings, training and incentives for career development. In 2024, we opened a daycare center and extended the daycare allowance from 48 months to 72 months.

## EXPANDING FEMALE PRESENCE



**400**

professionals registered in the Talent Bank exclusively for women.

**600**

women, including employees and outsourced workers, trained to lead their careers in the Lidera Mulher project.



## Open doors to quilombolas and riverside people

*30 community members hired for our administrative area*

In 2024, we launched the Open Doors Program, with exclusive vacancies for riverside and quilombola communities with no requirement for prior experience, age or higher education. In addition to employment, we ensure monitoring of professional development by offering qualifications and scholarships for higher education.

### MORE TRAINING AND EMPLOYMENT FOR LOCAL COMMUNITIES

**Our qualification programs and partnership initiatives are aimed at preparing for the job market and improving education levels.**

#### Young Apprentice Program

Professional qualification, in partnership with the National Industrial Training Service, for young community members.

- **61 young people trained in 2024**

#### Social Educational Programs

Providing, in conjunction with partner companies, professional training courses and literacy initiatives.

- **563 community members served in 2024**

## Income generation in balance with the environment

*We combine traditional knowledge with income opportunities for socioeconomic development and environmental conservation*

Among the MRN initiatives for income generation in the region is the acquisition of seeds from the community, which contribute, from the knowledge they hold of the forest, to the reforestation work that we carry out. We also work in the training of these communities with techniques to improve the collection work. The initiative is aligned with the United Nations (UN) Sustainable Development Goals (SDGs).

*In addition to selling the seeds to MRN, the community can diversify buyers and even reach the national market.*

**3.5 tons of seeds purchased from the community in 2024.**

**96 trained collectors in the Boa Nova and Saracá communities, in the Sapucaá-Trombetas Agro Extractive Settlement, in partnership with the national Redário network in 2024.**





# Projects support agroforestry systems and fish farming

Initiatives serve family farmers and small fish farmers and promote forest preservation and social, economic and environmental development

Farmers receive training, technical assistance for planting and cultivating Agroforestry Systems (SAFs), as well as support with inputs and equipment. We also maintain projects to strengthen family farming and fish farming, with training, technical support and infrastructure.

## SUPPORT FOR AGROFORESTRY SYSTEMS

- 43 families served in 221 actions
- 395 beneficiaries from 5 communities
- Investment + R\$ 510 thousand



## SUPPORT FOR FISH FARMING

- 8 families served, with 69 beneficiaries
- Investment: + R\$ 326 thousand



## APOIO À AGRICULTURA FAMILIAR

- 18 families served, with 172 beneficiaries
- Investment: + R\$ 401



2024 Data

## MELIPONICULTURE: EXTRA INCOME FOR 25 FAMILIES

In partnership with the Department of Agriculture and the Rural Workers Union of Terra Santa, we offer Terra Santa producers training on the correct management of the native bee species (Scaptotrigona sp.) with economic potential, without causing harm to the Amazon ecosystem.



# Formations reach farmers in settlements

73 families benefited from the communities of Lago Maria Pixi, who participate in the Sapucaá Agro Extractive Settlement Project (PAE), in the municipality of Oriximiná

Investments of R\$604 thousand applied based on a socioeconomic diagnosis prepared by Florestas Engenharias, with the participation of the Association of Communities of Glebas Trombetas and Sapucaá (ACOMTAGS), an institution representing the Sapucaá PAE.

## Courses, workshops and technical visits at Lago Maria Pixi

- Support for family farming
- Management of agroforestry systems
- Community-based tourism





# Education transforms lives for the Amazon

*Commitment to social responsibility*

To promote the learning and professional growth of quilombola and riverside communities, our programs and actions provide access to basic education, higher education and professional qualification.

**R\$ 7.1 million** invested in the Amazon Education Project and in the Support Programs for Basic Education (PAEB) and Higher Education (PAES) in 2024.



## Training in 2024

- **250** participants in professional and literacy courses in partnership with the Interstate Center for Social Studies (Cesi).
- **40** participants in free baking courses.
- **80** participants in professional training courses in partnership with Komatsu, Scania and Sotreq.
- **91** participants in courses under the Young Apprentice and Basic IT programs.

2024 Data.

Basic Education Support Program

**122** students

from quilombola and riverside communities served in 2024

Investment:  
**R\$ 6.2 million**

Higher Education Support Program

**51** university students

from quilombolas in the Boa Vista, Alto Trombetas I and Alto Trombetas II territories, served in 2024

Investment:  
**R\$ 391.6 thousand**

Education for the Amazon Project

**231** quilombolas and riverside communities benefited from professional training and education improvement courses in 2024

Investment:  
**R\$ 496.2 thousand**





# Dialogue with communities is a priority

*Practice has led us to mature our process of dialogue with various social actors, especially with the community*

In 2024, we strengthened dialogue with local populations, as one of the pillars of our Social License to Operate (LSO).

- **43** meetings with riverside and quilombola communities.
- **36** communities from Oriximiná, Terra Santa and Faro involved.

**R\$ 42,2 million**

Investments in community development



Socio-environmental programs, projects and actions.



Agreements signed with quilombola communities that manage the transfer of resources for projects under their own management.



Strengthening community associations so that they can act autonomously in their territories.



# Visit program reinforces transparency

*Didactic and transparent presentation of the stages of the sustainable cycle of bauxite mining*

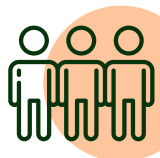
During the visit to our facilities, community members, students from public schools and from higher education institutions have the opportunity to learn more about mining, technologies in dam monitoring and reforestation.



Communities



Educational institutions



Family members of employees





## Health promotion is legacy and guarantee of well-being

*Investments reinforce the public health care structure of our employees, their families and communities*

Initiatives include the management of the Porto Trombetas Hospital, in partnership with the Vale do Trombetas Foundation, offering consultations, exams and surgeries. We also offer telemedicine consultations with specialists and logistical support for patient transfers to other health centers.



### HEALTHCARE IN 2024 HOSPITAL PORTO TROMBETAS

- **82,610** consultations in various health specialties.
- **668** surgeries.
- **370** hospitalizations.



### TELEMEDICINE

- **736** consultations carried out to assist our employees.
- **96%** resolution rate.

### QUILOMBO PROJECT

**63,000**  
procedures in 2024

#### Services offered to communities

- General clinic and nursing care.
- Hiperdia for monitoring hypertensive and diabetic patients.
- Vaccination..
- Distribution of medicines.
- Laboratory tests.
- Informative lectures.



## Quilombo Project: Preventive and curative actions

To expand healthcare services, we maintain the Quilombo project, which consists of monthly river expeditions with a team of healthcare professionals who travel through the quilombola communities of Alto Trombetas I and II\*.

The care team includes doctors, nurses and nursing technicians, who also contribute to awareness-raising and education actions for health prevention.

*\*The Alto Trombetas II territory has not been served since March 2024 by order of the Association of Remaining Quilombo Communities of Alto Trombetas II (ACRQAT)*





## Support for sports with the NGO “De Peito Aberto”

*300 children and young people granted with classes in various sports modalities and lectures to encourage healthy lifestyle*

The Sport Project in the City, held in schools in Porto Trombetas and in the cities of Terra Santa and Faro, received R\$ 190 thousand from MRN in 2024. The initiative is coordinated by the NGO “De Peito Aberto”.

We also support Municipal Councils of Children and Adolescents of Terra Santa, Faro and Óbidos for education, health, culture, sport and leisure activities, allocating R\$ 45 thousand in 2024.

- **5,684** participants in actions to prevent and combat violence against children and adolescents.

## “Maré do Amanhã” Orchestra

*In 2024, classical music and instrumental practice became part of the lives of 79 children and adolescents from communities in the region.*



Through free classical music classes, we seek to develop skills and explore the artistic potential of 79 children and young people from the Moura, Boa Vista and Ajudante communities and the Porto Trombetas district. With investments of own resources of R\$ 214 thousand in 2024.





# Project extends access to drinking water

As part of the environmental constraints assumed in the licensing process, we seek to expand access to drinking water for communities

The Microsystems and Artesian Wells Project consists of the construction of water collection structures for families in local communities, with five new systems implemented in 2024 in the communities of Boa Esperança and Bom Jesus, in Lago Batata. It is aligned with UN SDG 6.



## Microsystems and Artesian Wells in 2024



339 families served



124 home connections



R\$ 1.7 million in investments

2024 Data



Pé-de-Pincha project  
45,703 turtle hatchlings returned to nature, being:

- 15,826 hatchlings in Terra Santa.
- 29,877 hatchlings in Oriximiná.

Season 2024 data, with the release in 2025.

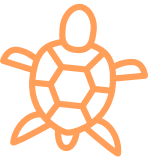


# Amazon turtles protected

Pé-de-Pincha Project, which encourages community engagement in turtle management, reinforces respect for biodiversity

As part of environmental conservation initiatives involving communities in the region where we operate, we carried out the Pé-de-Pincha Project, which resulted in the management of 45,703 Amazon turtle hatchlings in 2024. The hatchlings were returned to the wild in 2025.

Community participation is essential in monitoring nests, collecting eggs, and releasing hatchlings. The project is carried out in partnership with the Rio Solimões Institutional Support Foundation (Unisol) and the Federal University of Amazonas (Ufam).





# Reforestation with sustainability

*More than 7.7 hectares reforested from an initiative that combines traditional knowledge with science and technology*

With the participation of the communities of the region, we advance in the development of seedlings, planting techniques and monitoring, in addition to contributing to science in the cataloging of new species of the Amazonian flora.

## Unprecedented system monitors ecological restoration

Based on the 12 years of monitoring fauna, flora and soils, we have developed an unprecedented ecological restoration monitoring system in the sector and in the Amazon. The model, approved by the Brazilian Institute of the Environment and Renewable Natural Resources (IBAMA), was implemented in 2024.

Based on parameters adopted by the Society for Ecological Restoration, we compared the evolution of ecological processes over time to define whether a reforested area is, in fact, recovered.

Learn more about the Mining Areas Recovery Program:



**380**  
Forest Enhancement



**576,000**  
seedlings of 101 native species planted



**530,000**  
seedlings produced at the MRN Nursery

2024 Data





# Commitment to safety of operations

*We invest in new technologies aimed at maintaining high safety and socio-environmental standards of reservoirs and dams*

Real-time monitoring of the structures of our Residue Management System, which integrates 27 tailings reservoirs and 2 sediment dams.

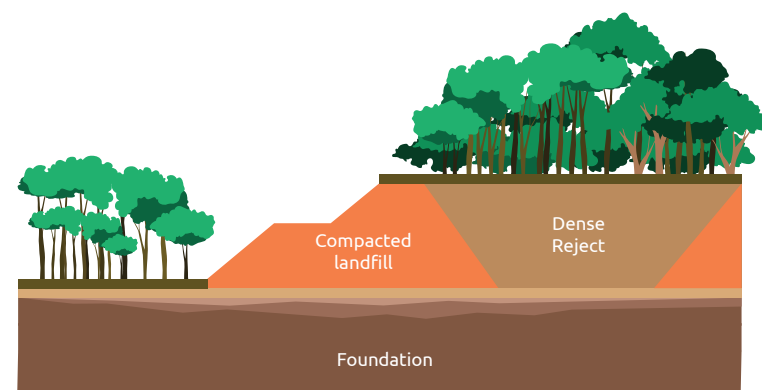
- **58 Regular Safety Inspection Reports.**

- **58 Declarations of conformity and operability, validated by the National Mining Agency.**

*Data from 2024*

## What happens to tailings reservoirs after use?

When they reach the end of their useful life, the reservoirs receive a layer of treated soil where native Amazonian species are planted. Reforestation also occurs in mined areas.



## Waste Management System



Dam Safety Plan guides operation, inspection and monitoring.



Regular assessments of structures by independent consultancies and audits.



24-hour monitoring and satellites to measure surface variations.



3 Dam Emergency Action Plans. Safety protocols are shared with communities.

**TAILINGS**  
Material separated from bauxite during its processing. It is composed of water and clay and does not contain toxic substances.



# Informed and engaged communities

*Keeping communities informed and prepared for any incident is part of our commitment to social and environmental safety and responsibility*

In 2024, we updated and revised the Emergency Action Plan for Mining Dams (PAEBM) for the Saracá East Plateau, where the tailings reservoirs and dams of the Port are located. We also prepared and implemented the PAEBM for the SP-25 reservoir, ensuring the operation of the structure on the Saracá West Plateau.

All information from the PAEBMs was validated by an external audit and submitted to the National Mining Agency (ANM), resulting in the issuance of the Declaration of Conformity and Operability for all our reservoirs and dams.



- **Community visits to the waste system**
- **Instructive seminars**
- **Conducting simulations**

- **Socialization: booklets about PAEBM**
- **Monthly siren tests**
- **PAEBM Notification Flow Exercise**

## Guided and simulated seminars

In 2024, we held four mentoring seminars and an emergency simulations for local communities. We present the production flow, the operation of the Residue Management System, the monitoring work and the safety tools of the structures.





## Rescue of fauna and flora

*Care with the recovery of mined areas begins well before the start of bauxite extraction*

We work with the rescue, salvage and multiplication of fauna and flora species for later reintroduction into areas that will be reforested. The work includes plant species that are destined for the MRN Forest Nursery for reproduction and epiphytes (bromeliads, orchids and aroids), including rare species in the Amazon.

Species rescue activities occur before and after the vegetation suppression stage, as in the case of animals. Epiphytes are collected first, with care that contributes to reforestation actions.



**6,395**  
plants rescued  
and reproduced  
in the MRN  
Forest Nursery.



**6,500**  
animals  
rescued before  
the vegetation  
was cleared  
from areas.

2024 data



*Bromelia saracaterensis registered in science in an unprecedented way by the MRN team*



**25,000**  
epiphytes  
rescued  
in 2024.



**20**  
species  
identified for  
the first time  
in science  
since the  
beginning of  
the program.

## Contribution of MRN to science

*We have spent 15 years rescuing and reintroducing epiphytes into the forest, with the discovery of species that are new to science*

The preservation of botanical materials has been done since 2009 and composes its scientific collection. We have already identified 20 new species of epiphytes, including *Catasetum taquerense* and *catasetum saraca-taquerense*, belonging to the family of orchids, which received such names in honor of the Saracá-Taquera National Forest.



**WHAT ARE EPIPHYTES?**  
Epiphytes are plants that live on trees and use them as support to survive, and can grow from the trunk to the crown. Some of the best-known examples include species such as orchids and bromeliads.



## Sustainable destination for more than 99% of residue

*Of the total of 3.6 tons of industrial waste, only 0.3% were sent to incineration or landfill*

The Industrial Waste Disposal Center concentrates all waste generated by operational areas, managed in different stages and processes.

**99.7% of industrial waste destined for reuse, recycling or processed by reprocessing in 2024.**

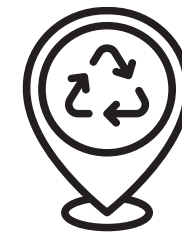
### New uses

Fiber tubes, wood, conveyor belts, scrap metal, plastics and rubber have already been reused in the structure of spaces such as living areas, bicycle parking, storage of supplies and creation of seedbeds for germinating seeds in our Forest Nursery.



**460** environmental education actions in waste generating areas.

## Central processes urban waste



- **8.145** tons of municipal waste
- **345** tons for recycling
- **405** tons for composting
- **1,243** tons of waste to landfill
- **7** tons of waste from health services for incineration

**The useful life of the Porto Trombetas landfill increased from 18 to 24 months with the expansion of organic waste composting and recycling.**



## Composting generates environmental gain with natural fertilizer

The organic waste discarded by residents of the district of Porto Trombetas and industrial restaurants are reused in the composting process and transformed into organic fertilizer, benefiting the residents themselves.





## Sustainable water management

*Management of monitoring and treatment systems of water and liquid effluents with innovative practices of consumption and recirculation of water*

- **Operations inserted in 10 watersheds.**
- **Catchment of surface waters authorized by the National Agency for Water and Sanitation (ANA).**
- **Underground captures granted by the State Secretariat for Environment and Sustainability of Para (SEMAS).**



# 84%

is the average water recirculation rate at MRN with a system for reusing rainwater over the waste system and water recovered from the waste itself.

### Water monitoring in 296 points

*Communities accompany and assist in the collection and monitoring of surface water, springs, groundwater and effluents.*

### Water Monitoring in 2024

- **More than 34 thousand** analyses.
- **124** parameters evaluated.
- **99,5%** de ccompliance with legal standards.

*Data from monitoring surface water and industrial liquid effluents.*

## Restoration of Lake Batata 35 years

- **120 hectares** of igapó forest planted = 111 soccer fields.
- **More than 800 thousand** igapó seedlings planted.
- **171 species** of fish recorded in the fishing effort carried out with the help of community members.
- **99 scientific publications** address the work of restoring the lake.

Turbidity index of the water in Lake Batata: 8.5% NTU (nephelometric turbidity units). It is lower than the limit set by the National Environmental Council, which is 100 NTU.

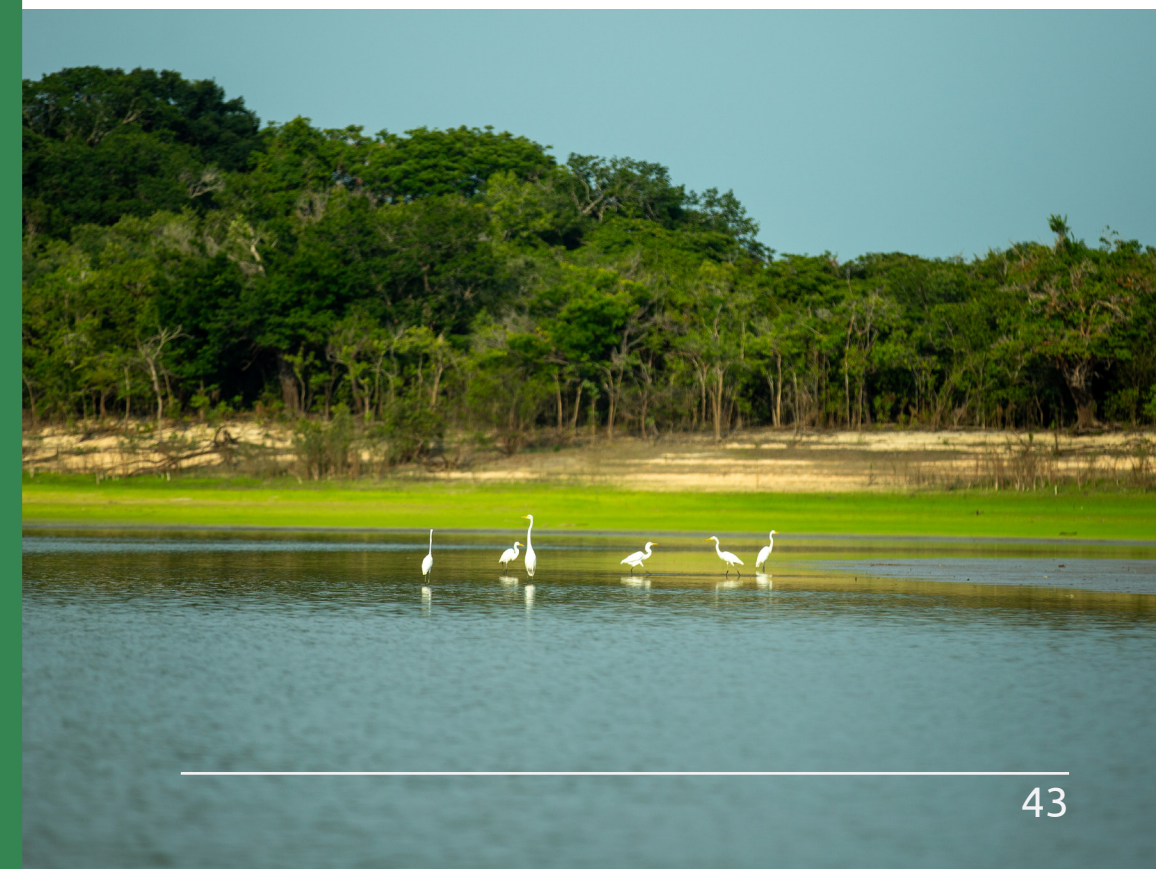
*Visit the hotsite of the ecological restoration of Batata Lake*



## Batata Lake: Restoration and learning

*We narrate the ecological restoration journey of this lake that, in the past, had 30% of its area impacted by the disposal of bauxite tailings*

After 35 years of interventions in partnership with researchers from the Federal University of Rio de Janeiro (UFRJ) and community participation, the impacted area of the lake has ecological conditions suitable for aquatic life, fauna and flora.







Mineração Rio do Norte S. A.  
Rua Rio Jarí s/nº Porto Trombetas  
CEP 68275-000 Oriximiná - PA